

## TRCF Fuse Holder Rated 58V



- 1.Compact, high-amp fuse—appropriate for DC Main, inverter, windlass, and bow thruster circuit protection
- 2.Provides high current protection in tight space constraints
- 3.Ignition protected when used with TRCF Terminal Fuse
- 4.Isolated stud design uses standard M8 hardware and permits stacking of terminals
- 5.Insulating cap prevents accidental shorts
- 6.Accepts 5 / 16" (M8) ring terminals
- 7.Mounts on 3/8" (M10) terminal studs
- 8.Fuse sold separately

### Specifications

Ignition Protected: NO

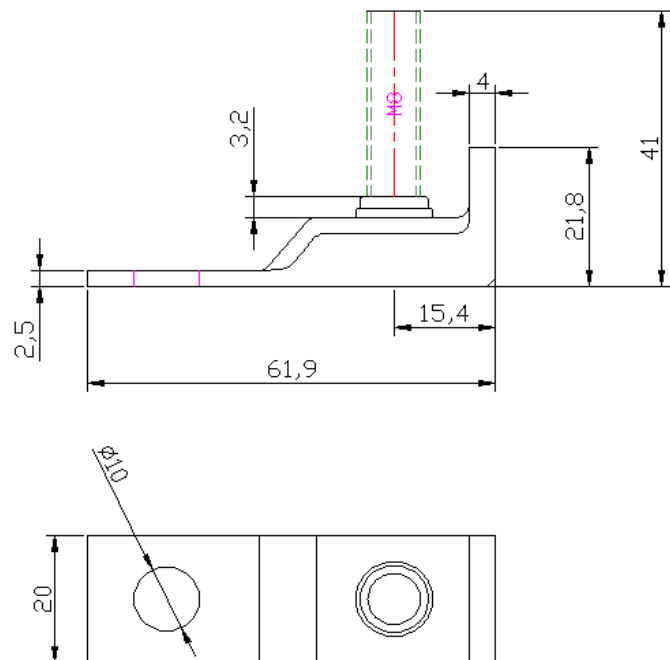
Maximum Amperage : 300A

Maximum Voltage: 58V DC

Terminal Stud: M8(5/16")

Maximum Torque: 75 in-lb

Weight:0.07KG



尺寸公差  $\pm 0.3\text{mm}$

5/16" ring terminal

Mounts on 3/8" (M10)  
terminal stud

